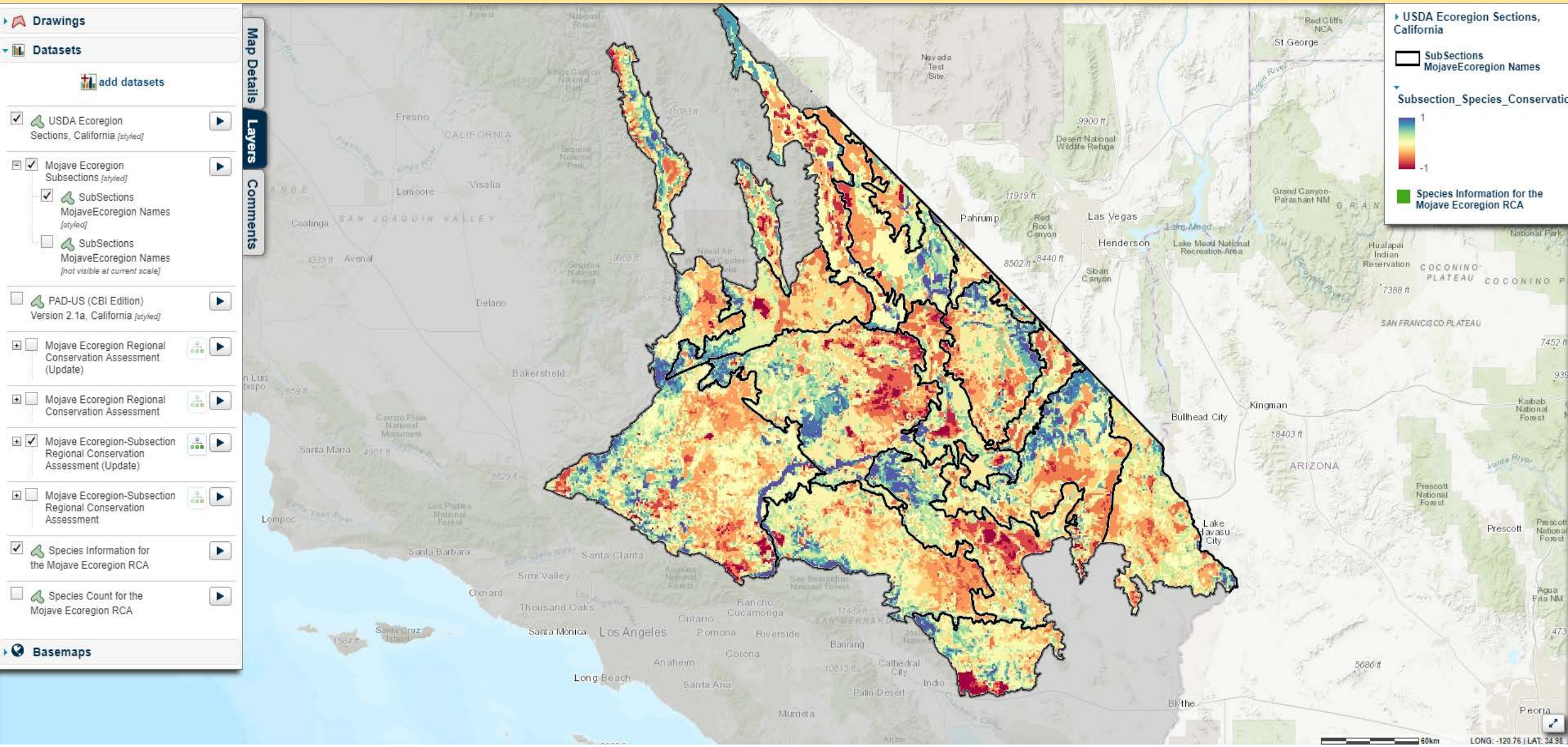


Riparian Summit: Project Prioritization and Regional Conservation Assessments



RCA Conservation Targets

Selection Criteria

- All listed species (federally or state T&E)
- SGCN species, CDFW Status SSC, WL, FP, 1B&2B plant species
- All DRECP species & other focal species from existing conservation plans (Antelope Valley RCIS species will be included)
- Threatened and Endangered Vegetation types
- Other Special Ecosystems / Habitats (e.g. wetlands)

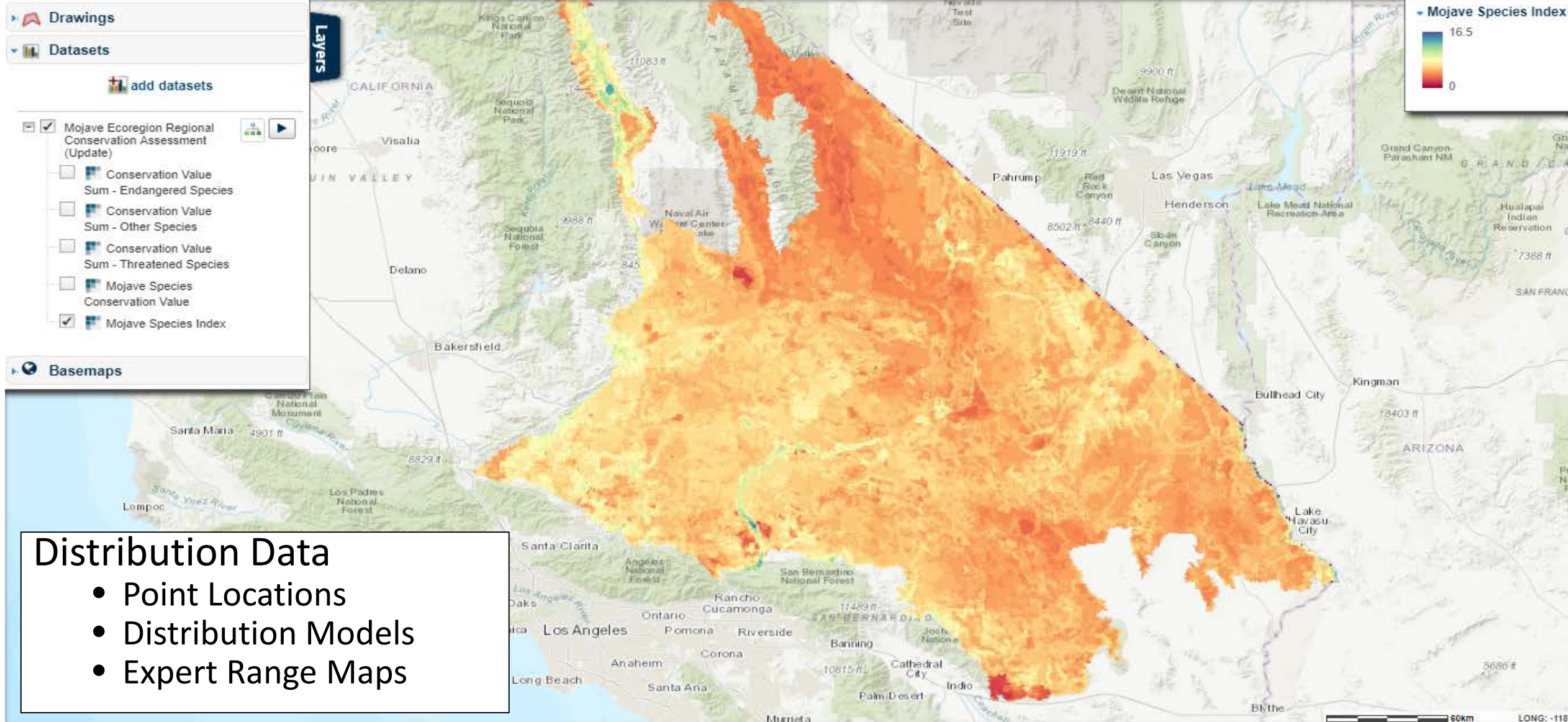
Mojave Conservation Targets: Species

<i>Agelaius tricolor</i>	tricolored blackbird	Inside	Mapped		Y		Y
<i>Anaxyrus californicus</i>	arroyo toad	Inside	Mapped			Y	
<i>Antrozous pallidus</i>	Pallid bat	Inside	Mapped		Y		Y
<i>Asio otus</i>	Long-eared owl	Inside	Mapped		Y		
<i>Astragalus jaegerianus</i>	Lane Mountain milk-vetch	Inside	Mapped			Y	Y
<i>Astragalus tricarlinatus</i>	triple-ribbed milk-vetch	Inside	Mapped			Y	Y
<i>Athene cunicularia</i>	Burrowing owl	Inside	Mapped		Y		
<i>Batrachoseps stebbinsi</i>	Tehachapi slender salamander	Inside	Mapped				Y
<i>Buteo swainsoni</i>	Swainson's hawk	Inside	Mapped		Y		Y
<i>Catostomus fumeiventris</i>	Owens sucker	Inside	Mapped				
<i>Charadrius montanus</i>	mountain plover	Inside	Mapped		Y	Y	Y
<i>Circus cyaneus</i>	Northern harrier	Inside	Mapped		Y		
<i>Coccyzus americanus occidentalis</i>	Western yellow-billed cuckoo	Inside	Mapped		Y		
<i>Colaptes chrysoides</i>	Gilded flicker	Inside	Mapped		Y		
<i>Corynorhinus townsendii</i>	Townsend's big-eared bat	Inside	Mapped		Y		Y
<i>Cyprinodon radiosus</i>	Owens pupfish	Inside	Mapped				Y
<i>Deinandra mohavensis</i>	Mojave tarplant	Inside	Mapped				Y
<i>Empidonax traillii extimus</i>	Southwestern willow flycatcher	Inside	Mapped		Y	Y	Y
<i>Erigeron parishii</i>	Parish's daisy	Inside	Mapped				Y
<i>Gila orcuttii</i>	arroyo chub	Inside	Mapped				
<i>Gopherus agassizii</i>	desert tortoise	Inside	Mapped		Y	Y	Y
<i>Grindelia fraxinipratensis</i>	Ash Meadows gumplant	Inside	Mapped			Y	Y
<i>Gymnogyps californianus</i>	California condor	Inside	Mapped		Y		
<i>Lanius ludovicianus</i>	Loggerhead shrike	Inside	Mapped		Y		
<i>Macrotus californicus</i>	California leaf-nosed bat	Inside	Mapped				Y
<i>Micrathene whitneyi</i>	Elf owl	Inside	Mapped		Y		
<i>Microtus californicus mohavensis</i>	Mohave river vole	Inside	Mapped		Y		
<i>Ovis canadensis nelsoni</i>	Desert bighorn sheep	Inside	Mapped		Y		Y
<i>Perognathus alticolus inexpectatus</i>	Tehachapi pocket mouse	Inside	Mapped		Y		Y
<i>Perognathus inornatus neglectus</i>	McKittrick pocket mouse	Inside	Mapped				
<i>Perognathus parvus xanthanotus</i>	Yellow-eared pocket mouse	Inside	Mapped		Y		

Mojave Conservation Targets: Ecosystems

Ecosystems			
<u>Scientific Name</u>	<u>Common Name</u>	<u>Mojave Name</u>	<u>State Rank</u>
<i>Spartina gracilis</i>	Alkali cordgrass marsh	Southwestern North American alkali marsh/seep vegetation	S1
<i>Sporobolus airoides</i>	Alkali sacaton grassland	<i>Sporobolus airoides</i>	S2.2
<i>Hilaria rigida</i>	Big galleta shrub-steppe	<i>Pleuraphis rigida</i>	S2.2
<i>Fremontodendron californicum</i>	California flannelbush	<i>Fremontodendron californicum</i>	S2
<i>Castela emoryi</i>	Crucifixion thorn stands	<i>Castela emoryi</i>	S1.1
<i>Ephedra funerea</i>	Death Valley joint fir scrub	<i>Ephedra funerea</i>	S2.3??
<i>Muhlenbergia rigens</i>	Deer grass beds		S2?
<i>Dicoria canescens</i> - <i>Abronia villosa</i>	Desert dunes	<i>Dicoria canescens</i> - <i>Abronia villosa</i>	S2.2
<i>Stipa speciosa</i>	Desert needlegrass grassland	<i>Achnatherum speciosum</i>	S2.2
<i>Forestiera pubescens</i>	Desert olive patches	<i>Forestiera pubescens</i>	S2.2
<i>Panicum urvilleanum</i>	Desert panic grass patches	<i>Panicum urvilleanum</i>	S1.2
<i>Salvia dorrii</i>	Desert purple sage scrub		S2.3
<i>Ruppia (cirrhosa, maritima)</i>	Ditch-grass or widgeon-grass mats	Southwestern North American alkali marsh/seep vegetation	S2
<i>Parkinsonia microphylla</i>	Foothill palo verde desert scrub	<i>Parkinsonia microphylla</i>	S1.2
<i>Ziziphus obtusifolia</i>	Graythorn patches		S2?
<i>Tetracoccus hallii</i>	Hall's shrubby-spurge patches	<i>Tetracoccus hallii</i>	S1.1
<i>Eriogonum heermannii</i>	Heermann's buckwheat patches		S2?
<i>Stipa hymenoides</i>	Indian rice grass grassland	<i>Achnatherum hymenoides</i>	S1.2
<i>Juncus xiphioides</i>	Iris-leaf rush seeps		S2?
<i>Hilaria jamesii</i>	James' galleta shrub-steppe		S2.2
<i>Nolina (bigelovii, parryi)</i>	Nolina scrub	Intermountain shallow/calcareous soil scrub	S2.2
<i>Prosopis pubescens</i>	Screwbean mesquite bosques		S2.2
<i>Quercus turbinella</i>	Sonoran live oak scrub		S1.3
<i>Pinus edulis</i>	Two-needle pinyon stands		S2?
<i>Betula occidentalis</i>	Water birch thicket		S2.2
<i>Sesuvium verrucosum</i>	Western sea-purslane marshes	Southwestern North American alkali marsh/seep vegetation	S2.2?
<i>Krascheninnikovia lanata</i>	Winterfat scrubland	<i>Krascheninnikovia lanata</i>	S2
<i>Anemopsis californica</i>	Yerba mansa meadows	Southwestern North American alkali marsh/seep vegetation	S2?

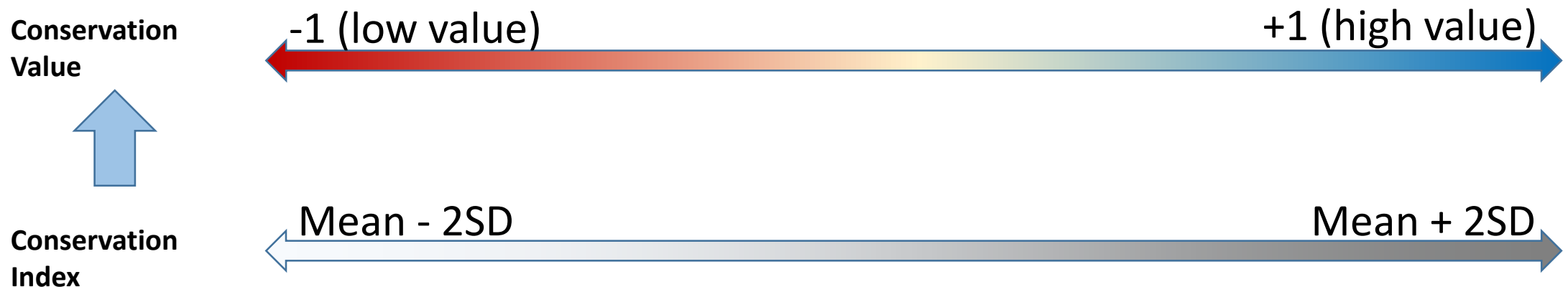
Ecoregional Conservation Value: Number of Targets



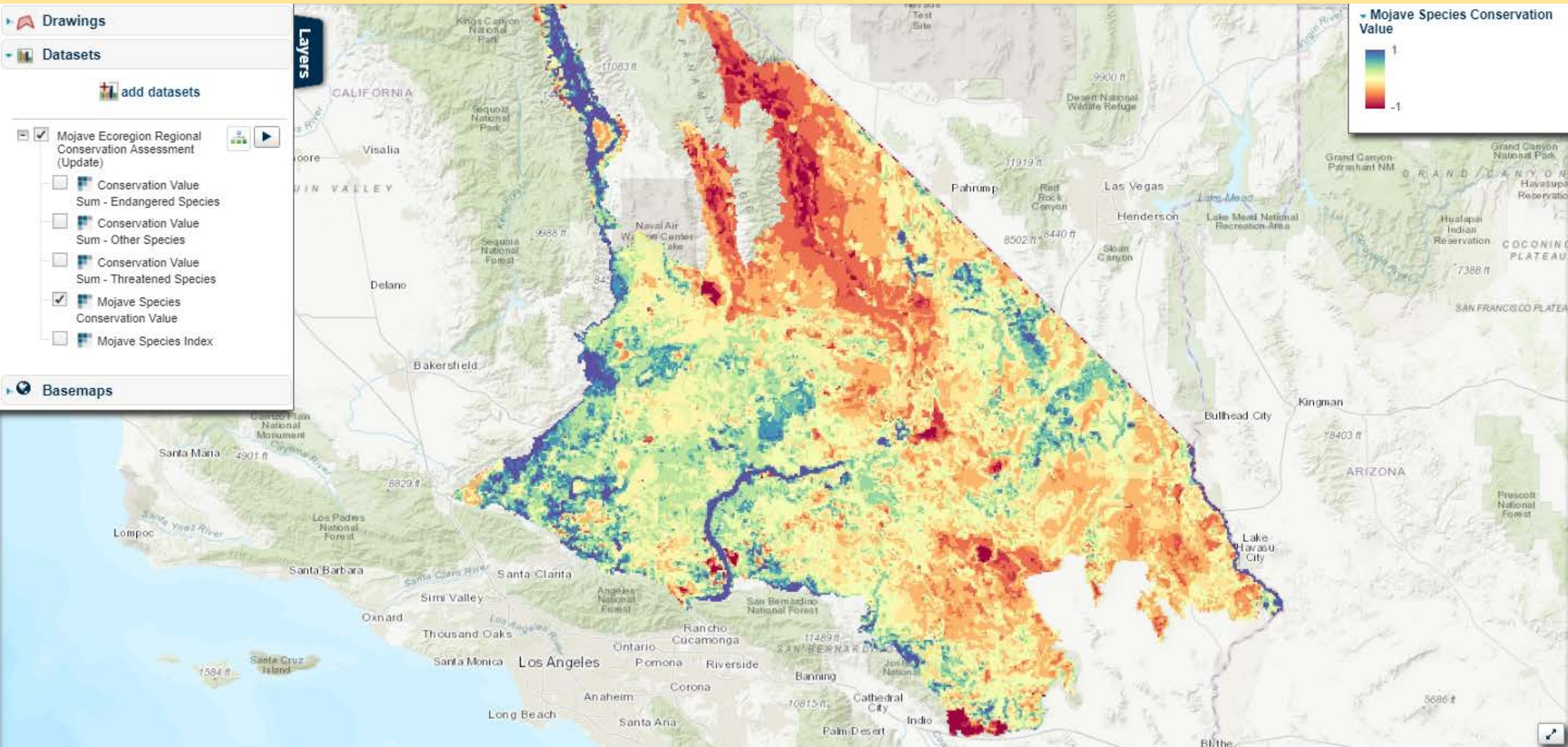
Conservation Value Maps

Logic model represents conservation values for all conservation targets across the Mojave Ecoregion (181 targets currently included in system)

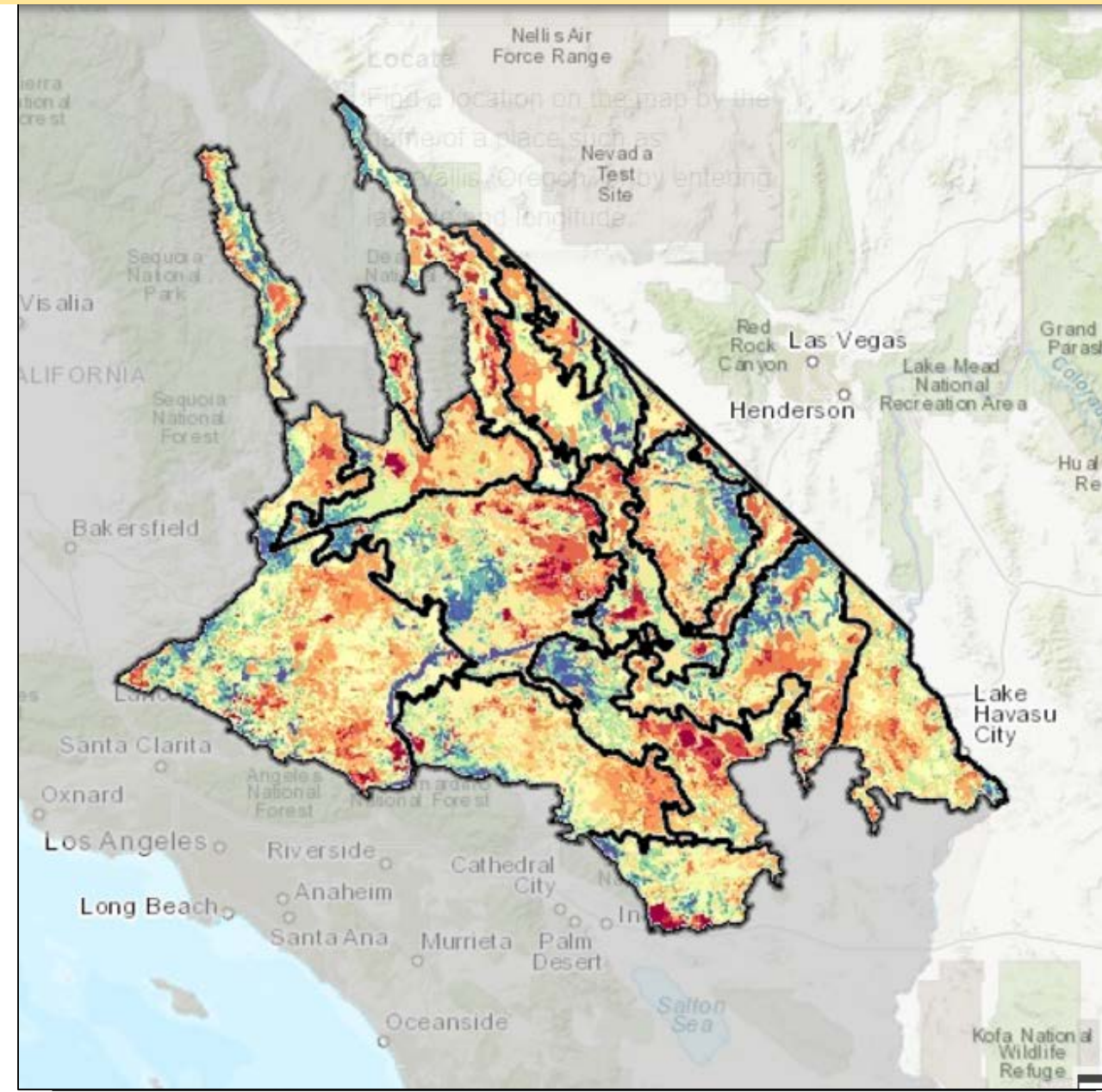
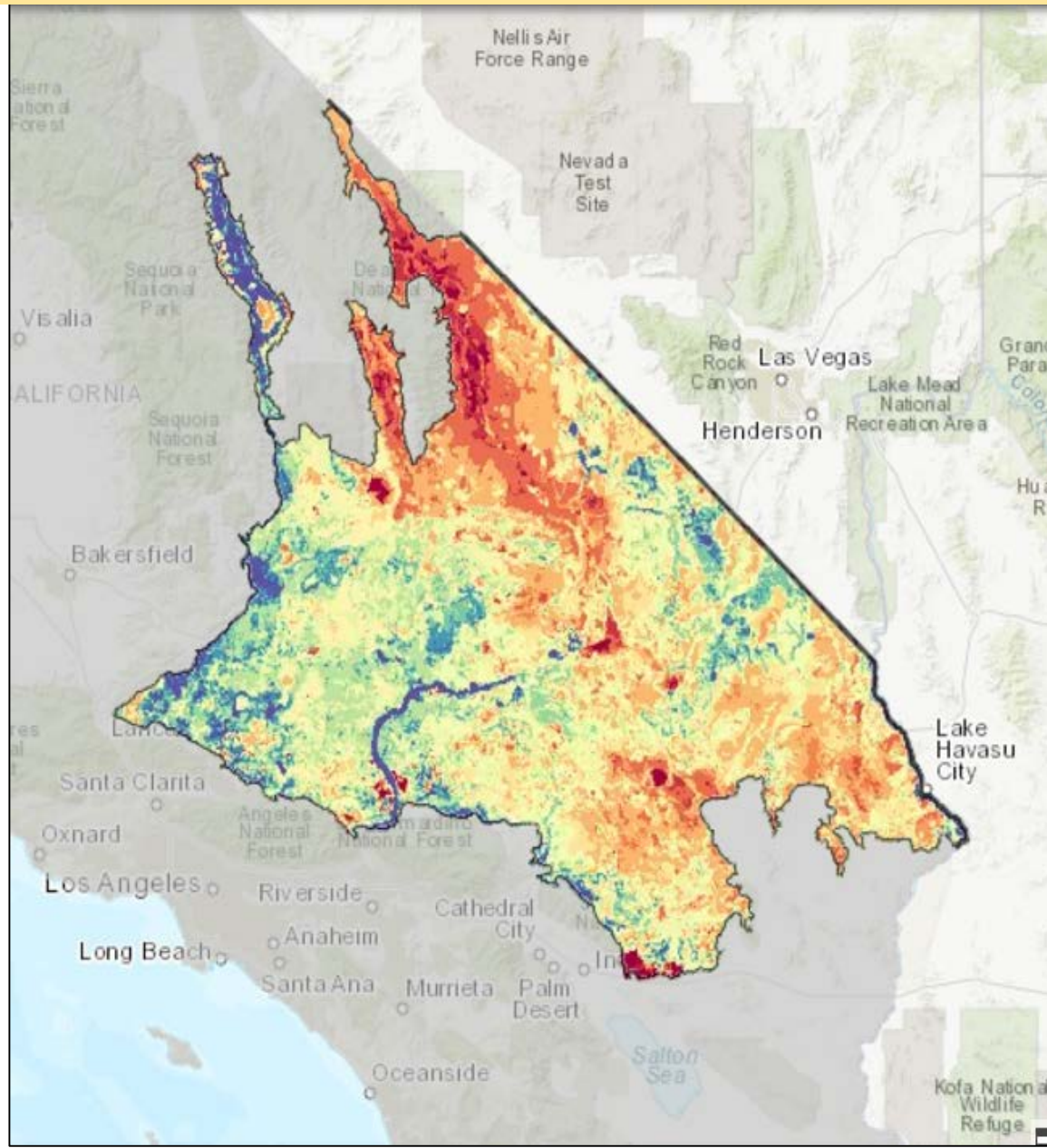
- Units of analysis are 1 square kilometer reporting units
- The base conservation value for each target is based on its documented conservation status (Endangered = 3, Threatened = 2, Other = 1)
- The mapped conservation value for each target is determined by probability of occurrence. CNDDDB Location/Point Locations = 1, Expert or statistical model output = 0.75, Range maps = 0.5



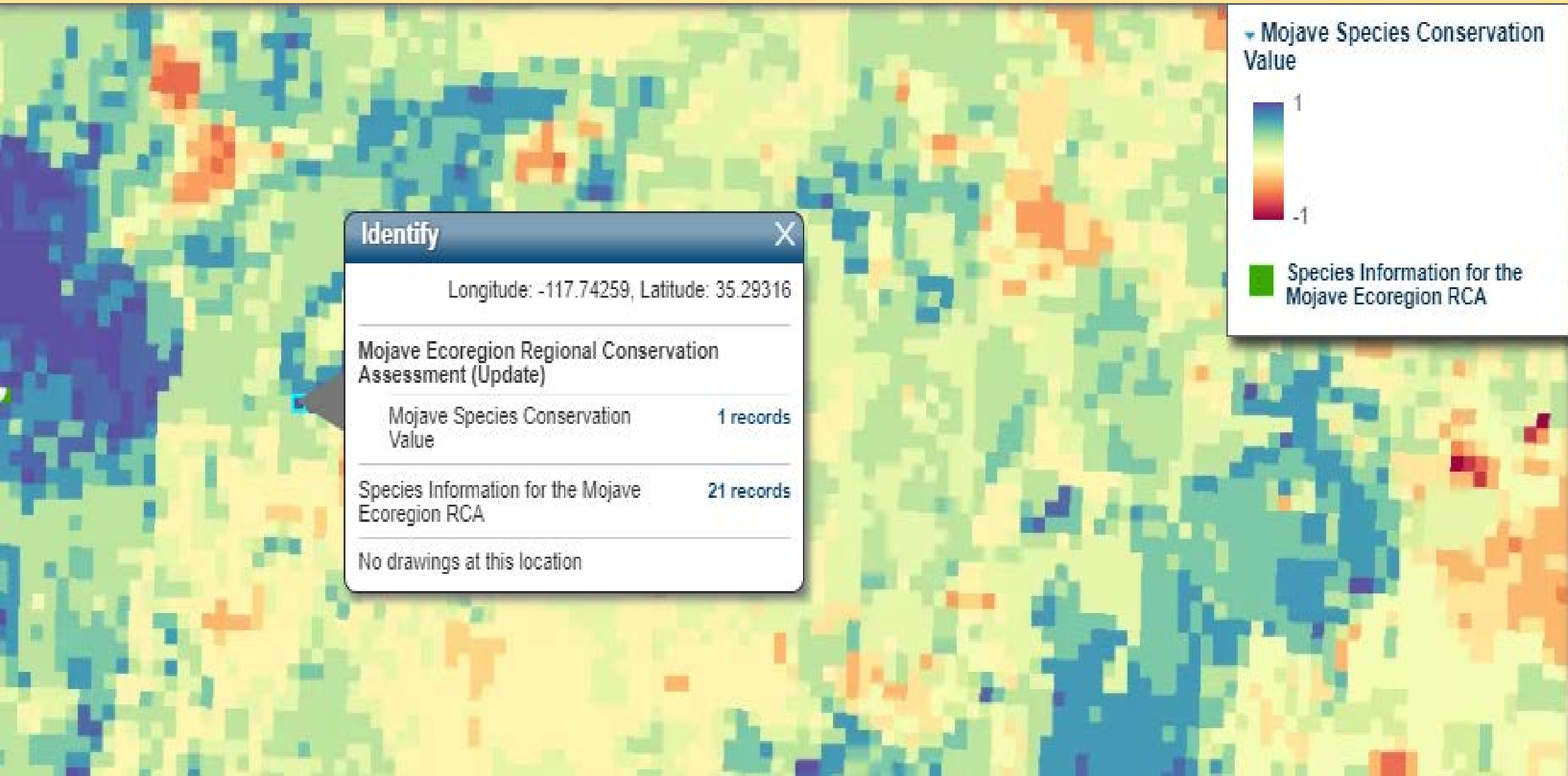
Ecoregional Conservation Value



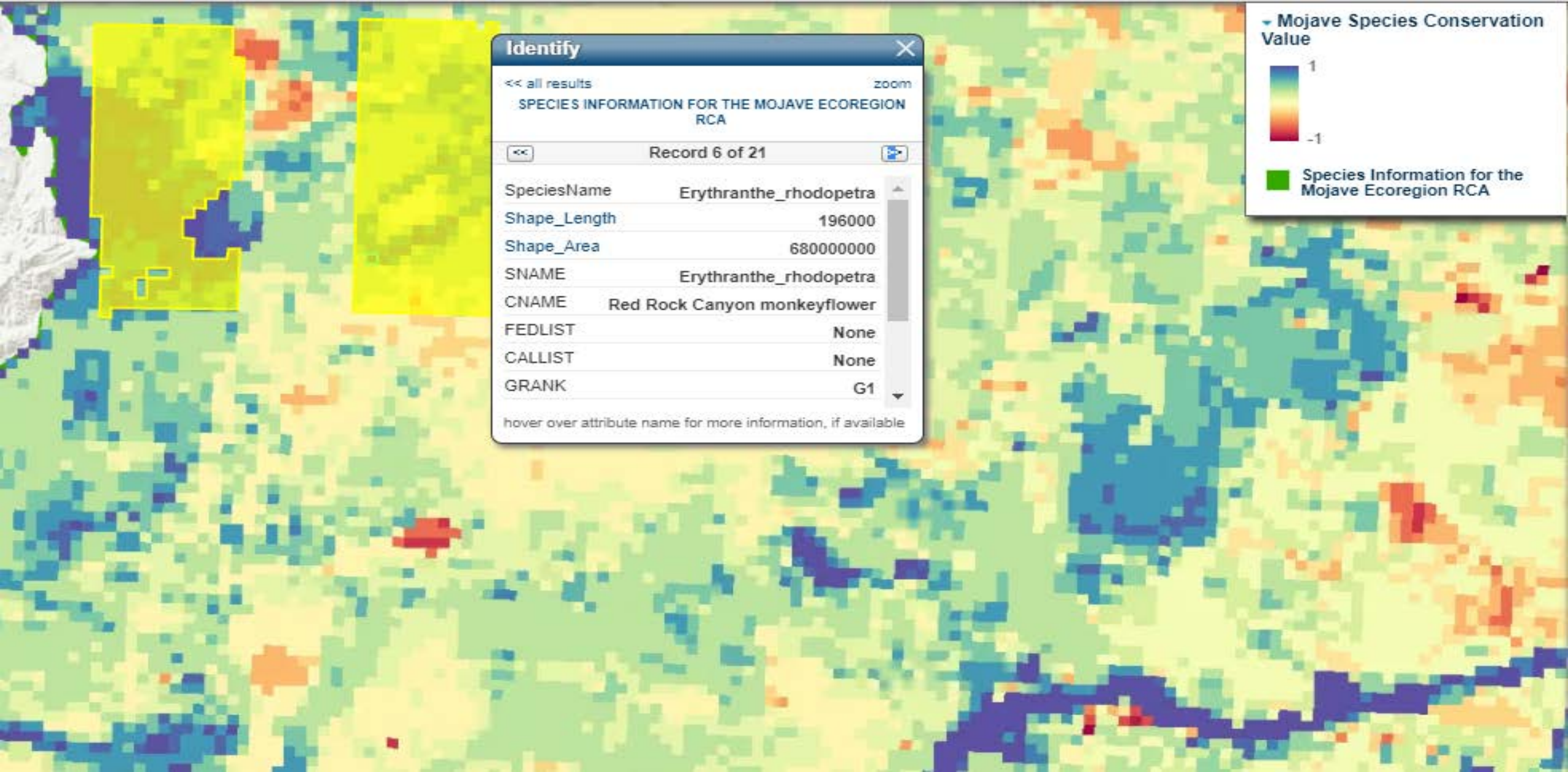
Conservation Value: Ecoregion Section & Subsection



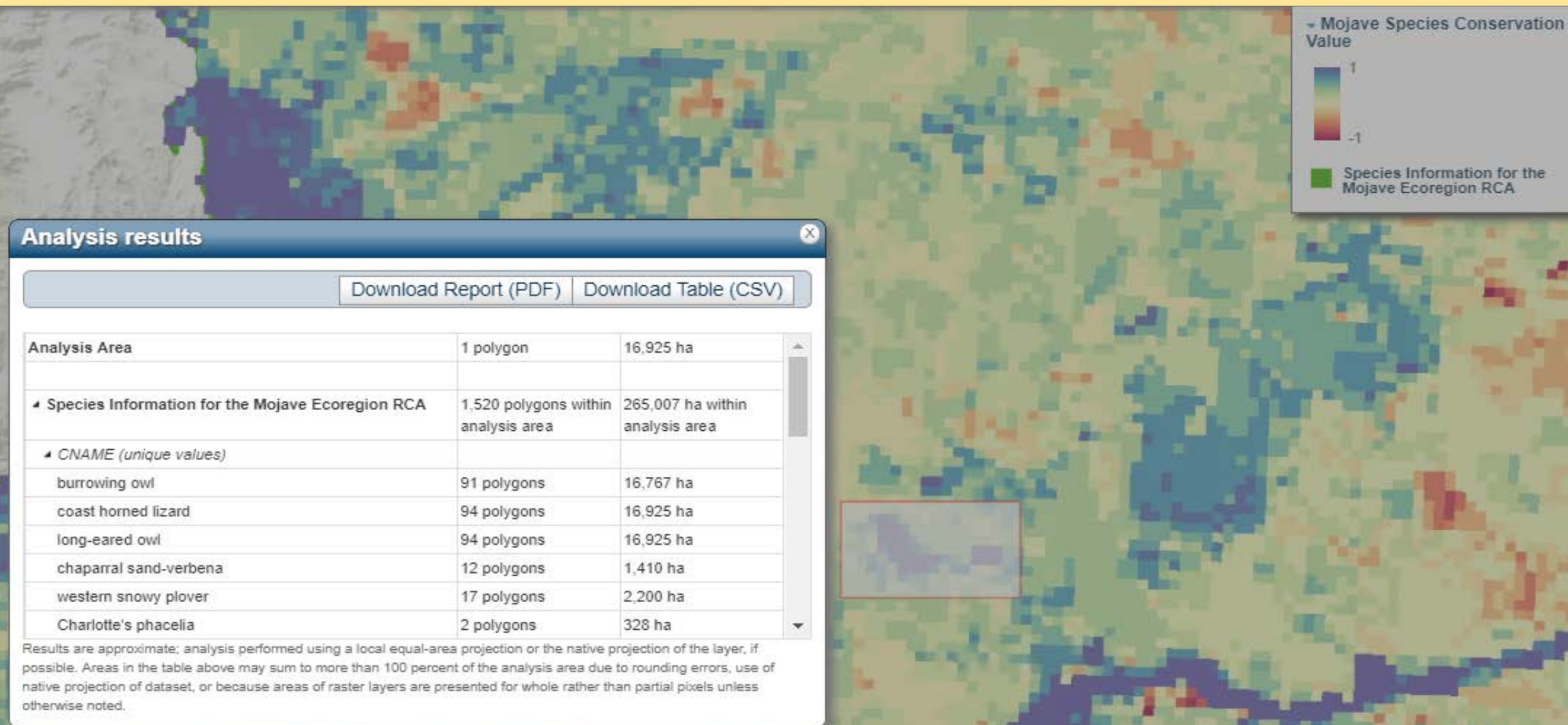
Site Analysis



Site Analysis



Project Analysis



Information Context for Conservation Planning

Prior Steps will Identify Representative Areas of High Conservation Value.
Conservation Action across these areas will be informed by:

- Opportunity Data Layers
 - Corridors and Connectivity
 - Ownership
 - Landscape Integrity
 - SWAP Priority Areas
- Threat Data Layers
 - Imminence of development
 - Fragmentation
 - Invasive species
- Ecosystem Service Co-benefit Data Layers
 - Groundwater Recharge
 - Carbon Sequestration
 - Prime Agricultural Lands

Regional Conservation Assessment and Planning Tool

Log In ▾



Introduction **Select Targets** Define Areas Results

☒ All Focal Species ⓘ

☒ Endangered & Threatened Species ⓘ

☒ Mammals +

☒ Birds +

☒ Reptiles +

☒ Amphibians +

☒ Fishes +

☒ Invertebrates +

☒ Plants +

Click to expand

☒ Focal Ecosystems + ⓘ

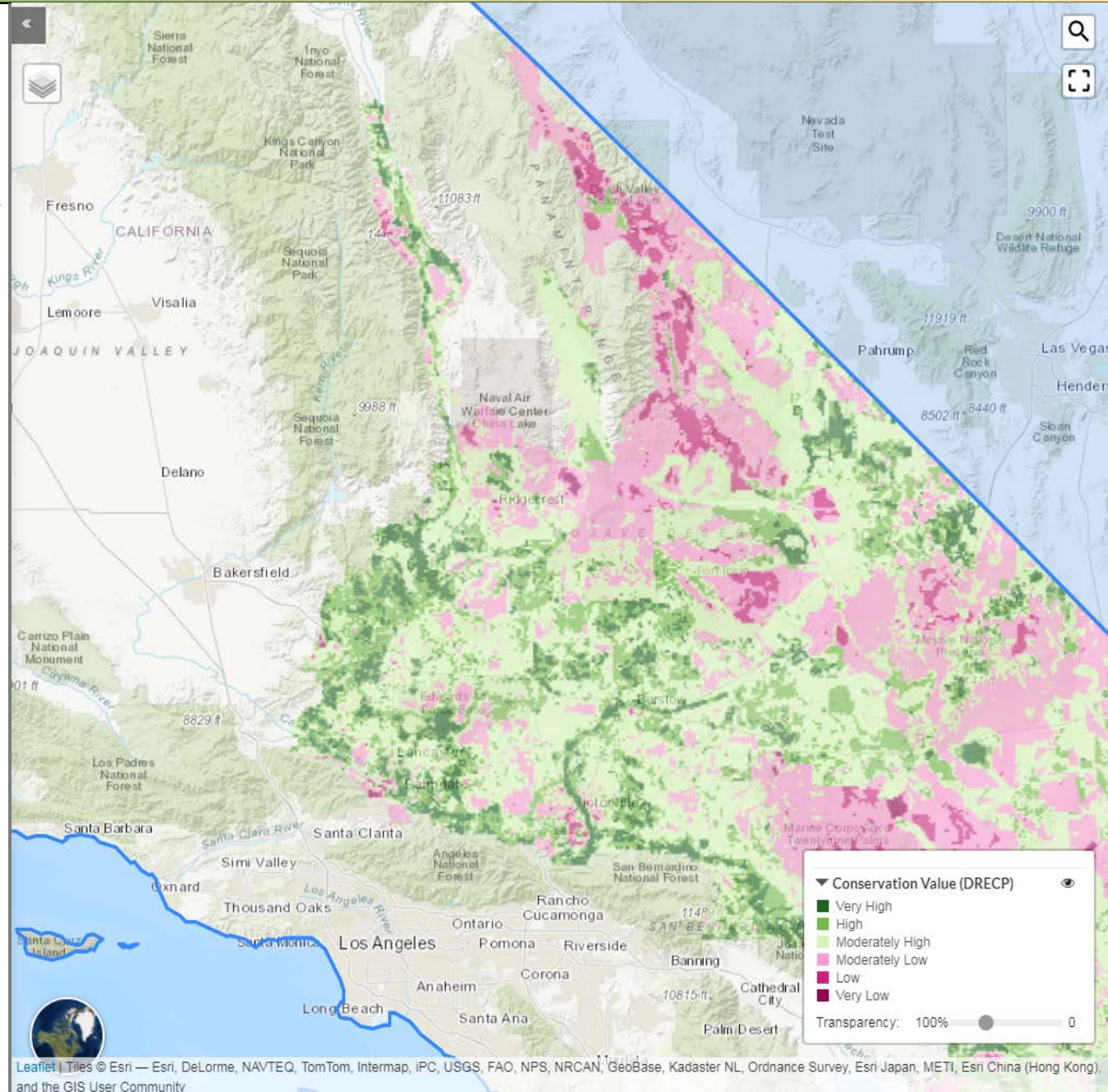
☒ Focal Special Features ⓘ

☒ Sand Source Areas ☒ Spring and Seeps

☒ Sand Dunes ☒ Caves, Mines, and Cliffs

Clear All Shapes

Run Analysis

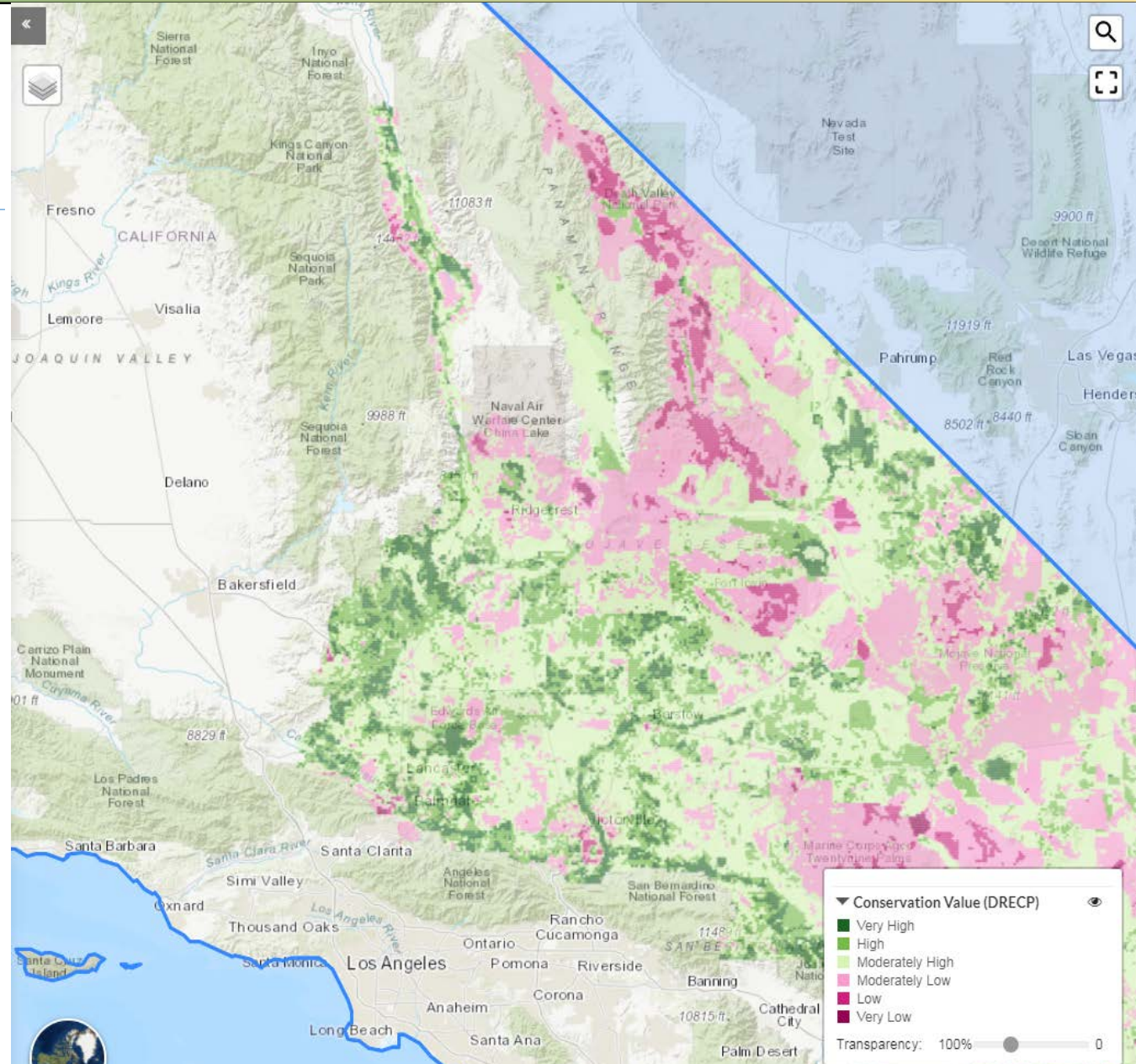


Regional Conservation Assessment and Planning Tool

Log In ▾

Introduction **Select Targets** Define Areas Results

- ☒ All Focal Species ⓘ
- ☒ Endangered & Threatened Species ⓘ
 - ☒ Mammals +
 - ☒ Bats
 - ☒ Townsend's big-eared bat
 - ☒ California leaf-nosed bat
 - ☒ Long-legged myotis
 - ☒ Cave myotis
 - ☒ Big free-tailed bat
 - ☒ Pallid bat
 - ☒ Rodents
 - ☒ Mojave ground squirrel
 - ☒ Yellow-eared pocket mouse
 - ☒ McKittrick pocket mouse
 - ☒ Tehachapi pocket mouse
 - ☒ Mohave River vole
 - ☒ Other
 - ☒ American badger
 - ☒ Desert bighorn sheep
 - ☒ Desert kit fox



Clear All Shapes

Run Analysis

Leaflet | Tiles © Esri — Esri, DeLorme, NAVTEQ, TomTom, Intermap, IPC, USGS, FAO, NPS, NRCAN, GeoBase, Kadaster NL, Ordnance Survey, Esri Japan, METI, Esri China (Hong Kong), and the GIS User Community

Regional Conservation Assessment and Planning Tool

Log In ▾



Introduction Select Targets Define Areas **Results**

Conservation Value ▾

Dropdown shows other results for ancillary datasets (e.g., intactness, connectivity, climate, SWAP, ACE III, etc.)

Conservation Value



Click to see map

Click to see in Data Basin

Shape A

Very Low

0%

Low

0%

Moderately Low

27%

Moderately High

32%

High

19%

Very High

22%

Shape B

Very Low

0%

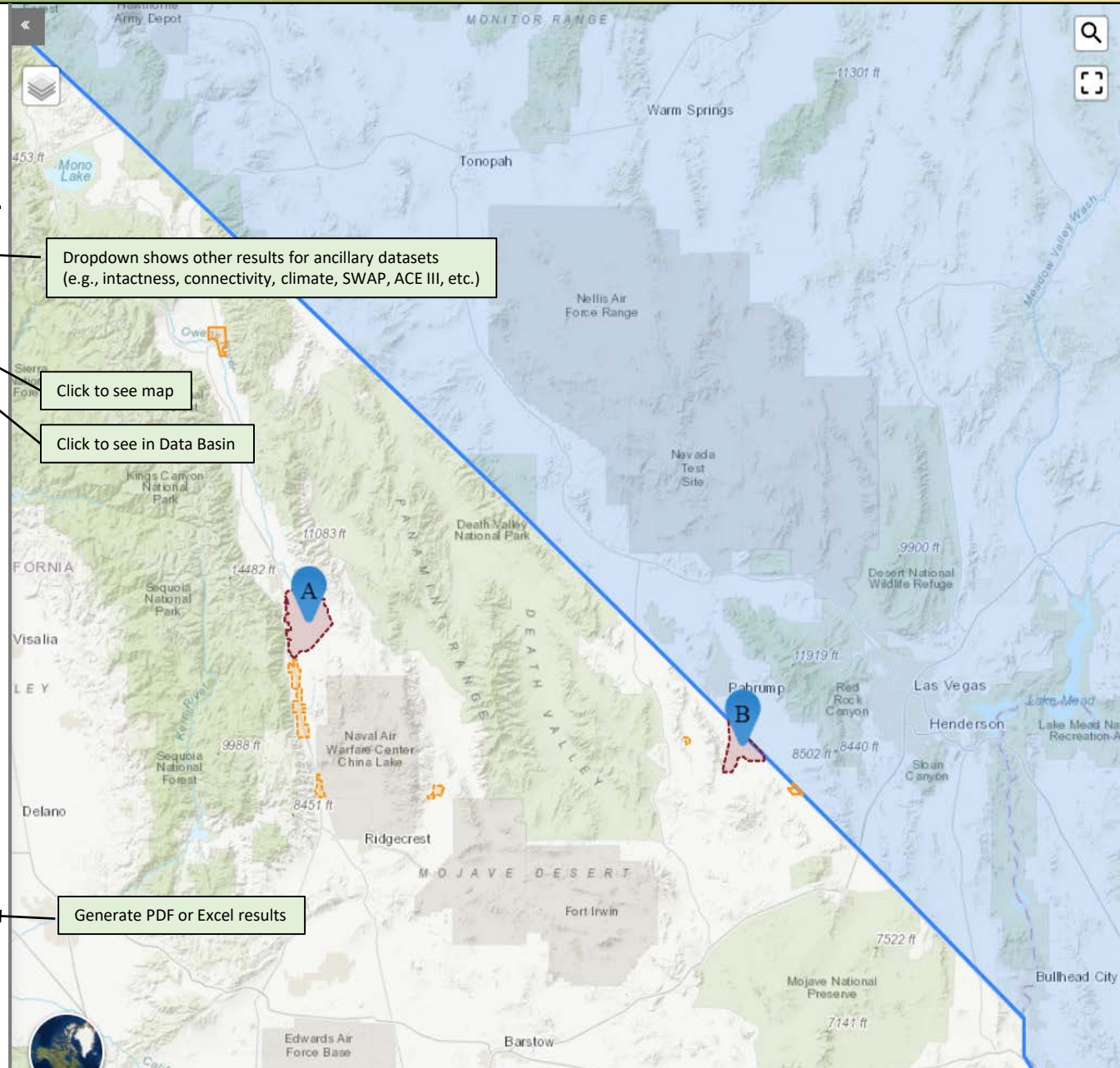
Low

0%

Download

Generate PDF or Excel results

Save



Density of groundwater dependent wetlands and vegetation alliances in California

