

Assessing Willow Flycatcher population size and distribution to inform meadow restoration priorities in the Sierra Nevada and southern Cascades

Helen Loffland

Rodney Siegel

The Institute for Bird
Populations



Chris Stermer

California Department of
Fish and Wildlife



Ryan Burnett

Brent Campos

Point Blue Conservation
Science



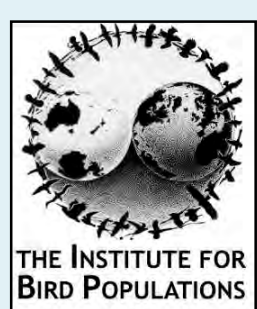
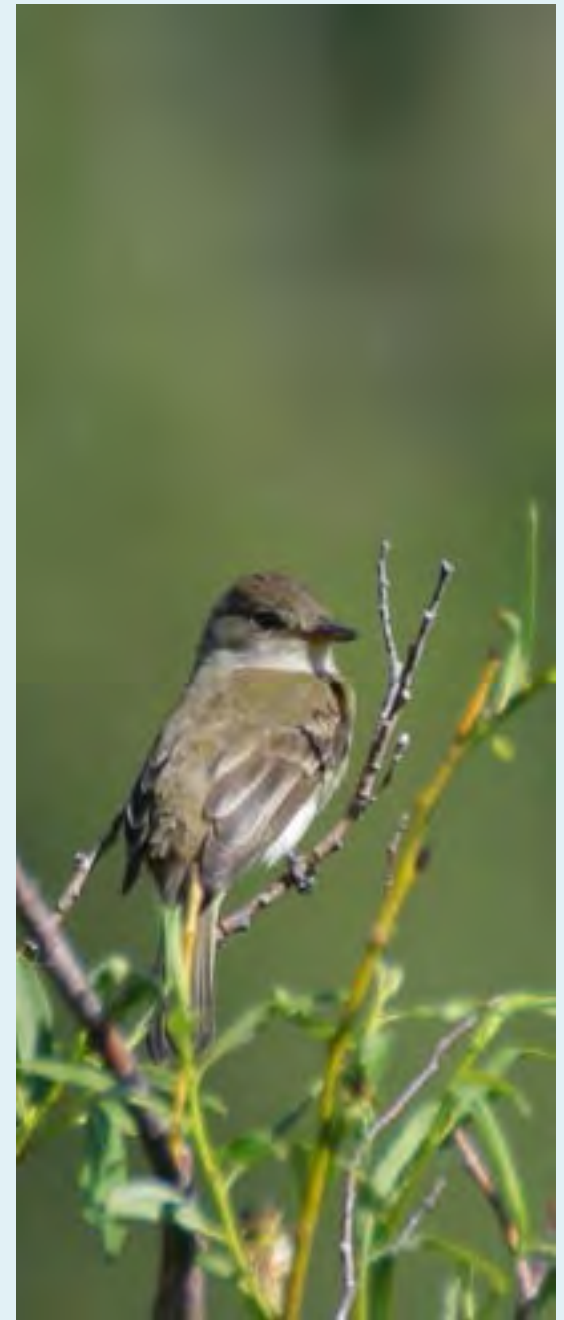
Tina Mark

Tahoe National Forest



Objectives

- Combine records from multiple sources into one GIS point layer
- Generate a “occupied meadows” GIS polygon layer
- Examine patterns in meadow occupancy by Willow Flycatchers
- Identify priority management areas



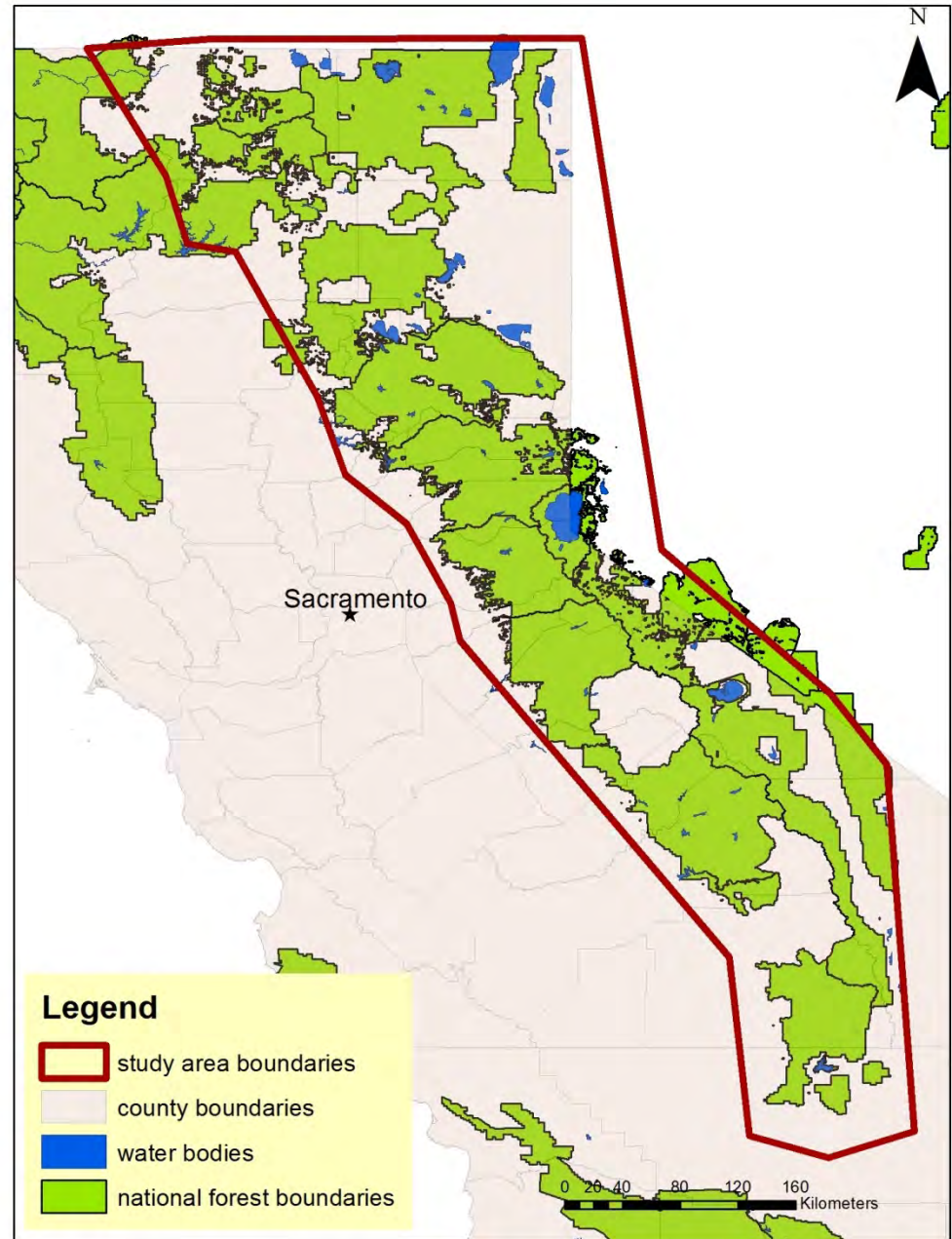
Study area

Sierra Nevada and
southern Cascades in
California

E. t. adastus

E. t. brewsterii

E. t. extimus



Methods: compiling records



- USDA Forest Service's NRIS database
- California Department of Fish and Wildlife CNDDDB database
- The Institute for Bird Populations' Monitoring Avian Productivity and Survivorship (MAPS) database
- Point Blue's MIS and meadow monitoring and flycatcher surveys on the Lassen and Plumas National Forests 2000-2014
- CDFWs Sierra-wide and McCloud River Willow Flycatcher surveys 2003-2006
- IBP's meadow restoration monitoring: 2010 - 2014
- Willow Flycatcher surveys in Yosemite N.P. 2007 - 2008
- Region 5 Forest Service 2011 site history summary tables for known Willow Flycatcher locations
- Nest and territory locations and survey results from demographic monitoring: 1997 - 2010
- Source data from the 2001 Forest Service's Sierra Nevada plan amendment
- Western Foundation of Vertebrate Zoology museum records

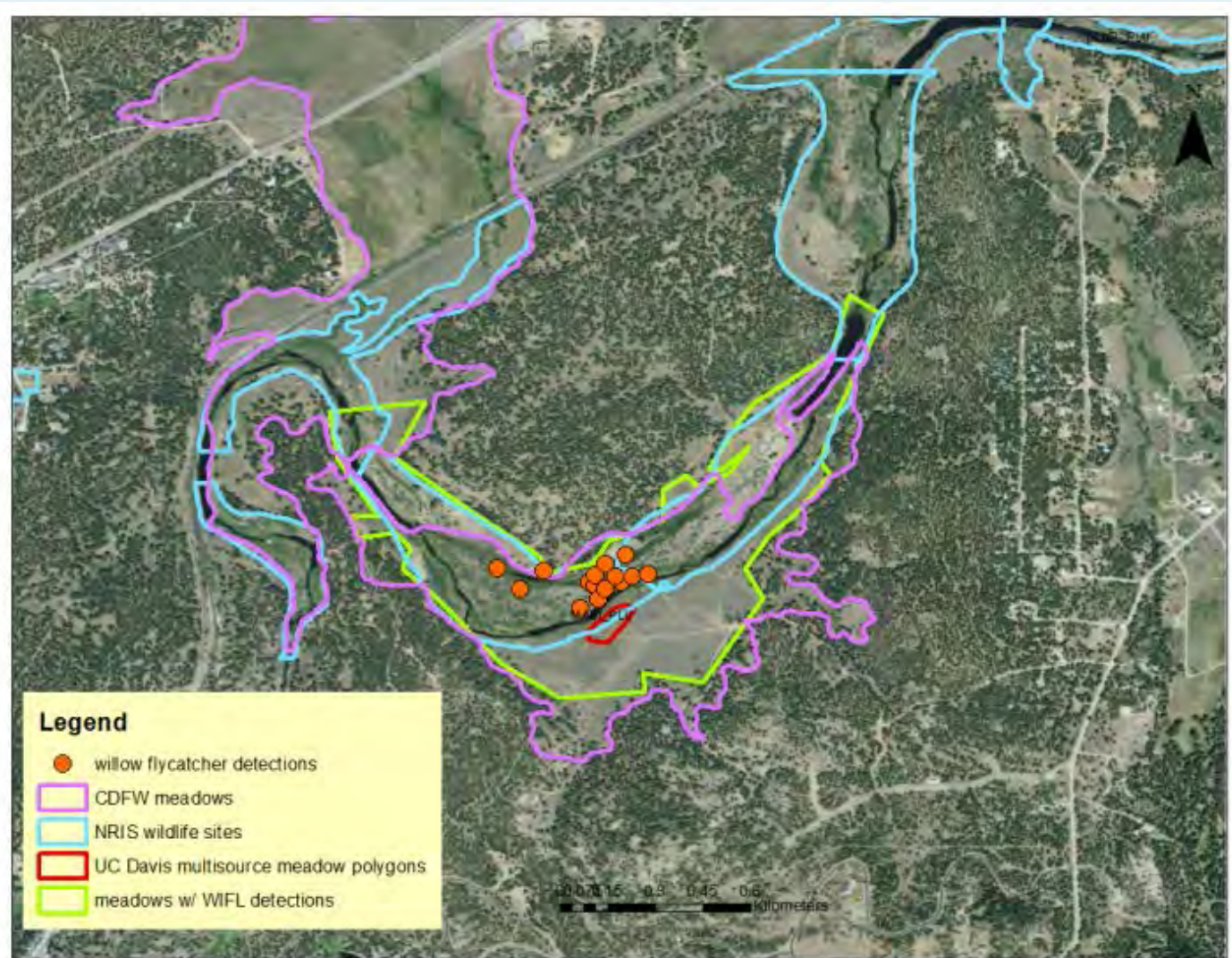
Methods: observation data

- Created single observation table with common fields for all data sources
- Created linked tables for each individual data source



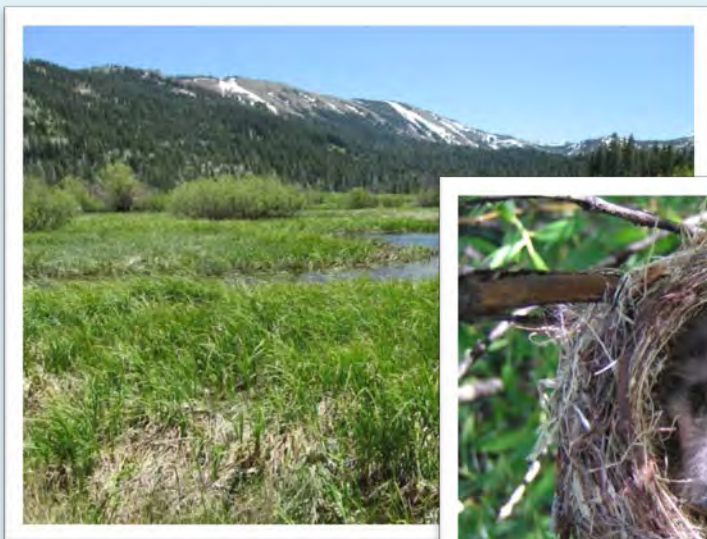
Methods: assigning observations to meadows

- Delineate “meadow” boundary
- Link observations to meadows
- Identify ownership



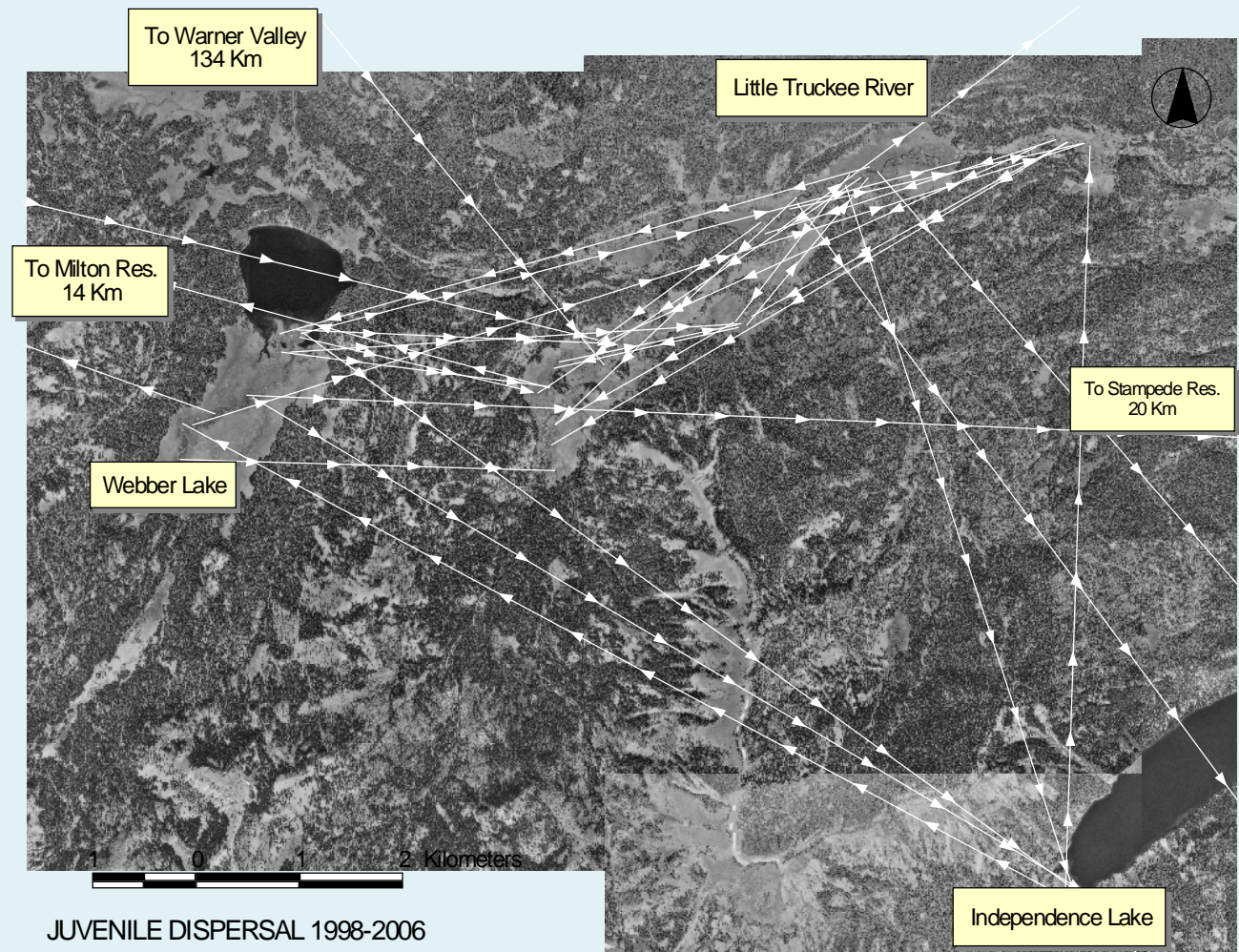
Methods: Determining status

migrant	breeding	migrant
May – June 14	June 15 - July 31	August 1 – October



Methods: Identifying priority management zones

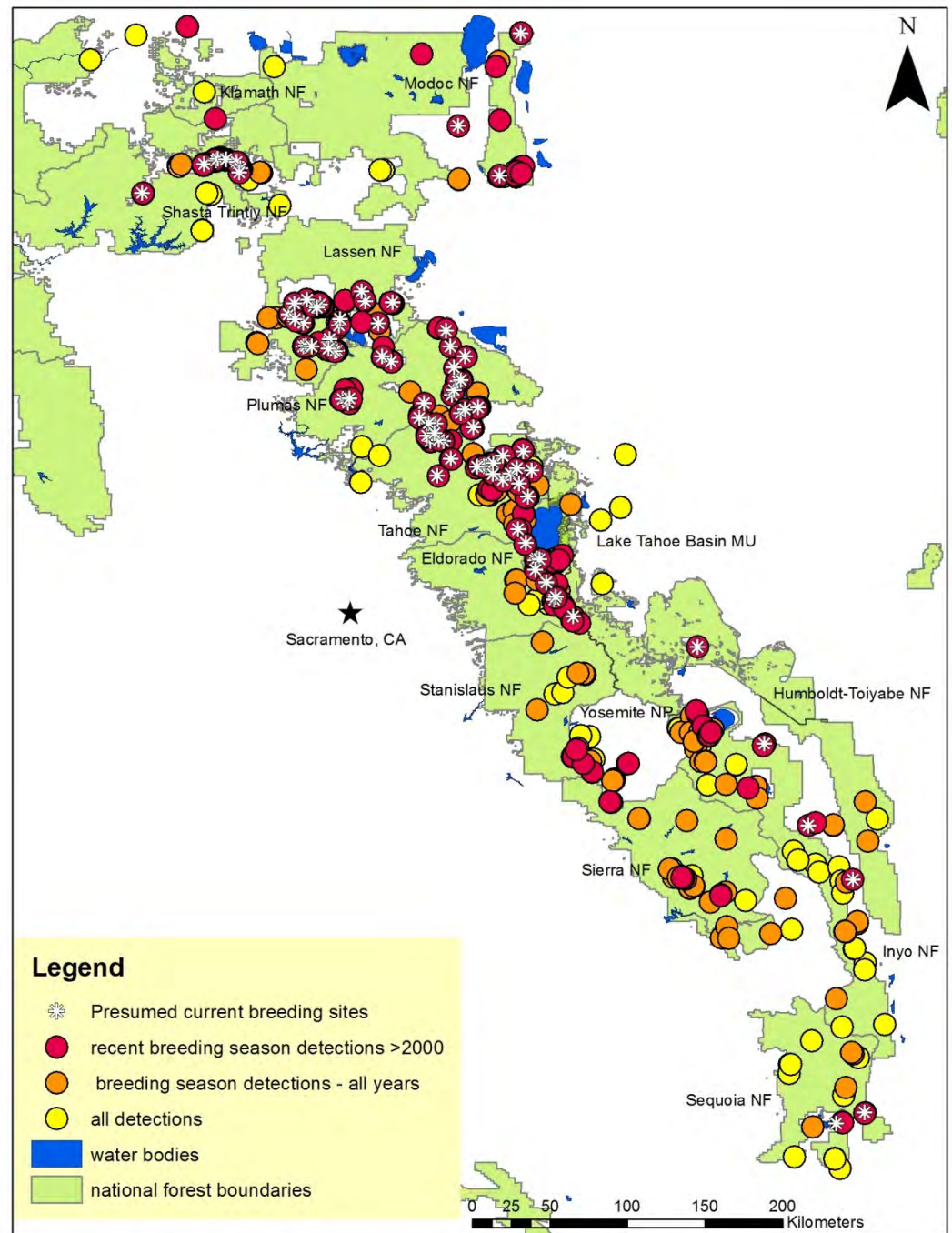
- Applied 12km buffer to meadows

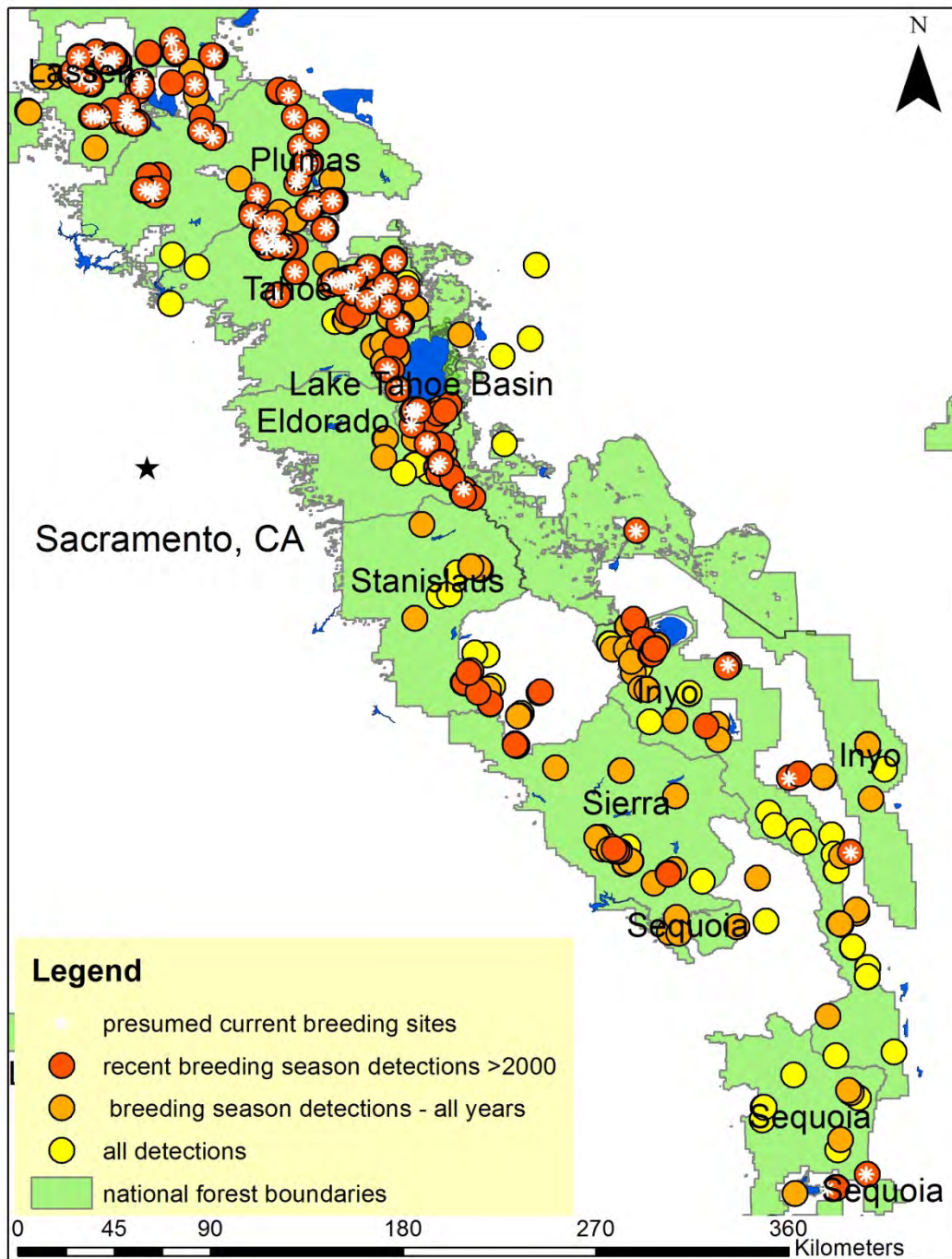


JUVENILE DISPERSAL 1998-2006

Results

- **297** meadows with breeding season and/or migration season detections (all years)
- **225** with breeding season detections (all years)
- **142** with breeding season detections since 2000
- **94** presumed currently occupied





Number of meadows with Willow Flycatcher detections



Land manager	All detection types	Breeding season all years	Breeding season >2000	presumed current breeding
Forest Service	196	157	106	70
National Parks	18	12	7	2
BLM	3	1	0	0
State Lands	10	8	5	3
Private	70	47	24	19
Total	297	225	142	94

Area of occupied meadows (ha)



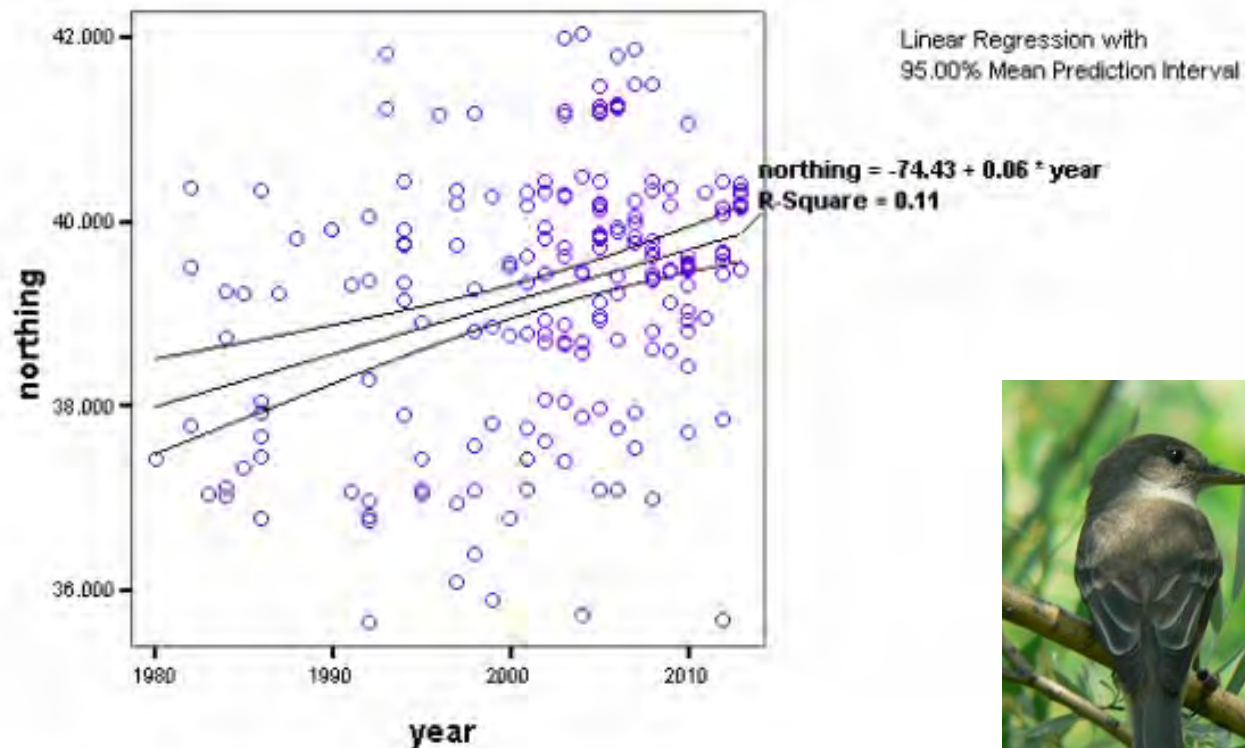
Land manager	All detection types	Breeding season all years	Breeding season >2000	presumed current breeding
Forest Service	7,625	6,752	5,726	4,108
National Parks	311	262	202	56
BLM	9	2	0	0
State Lands	879	809	631	607
Private	4,722	4,120	2,593	2,062
Total	13,546	11,945	9,152	6,833

Mean size of occupied meadows (ha)

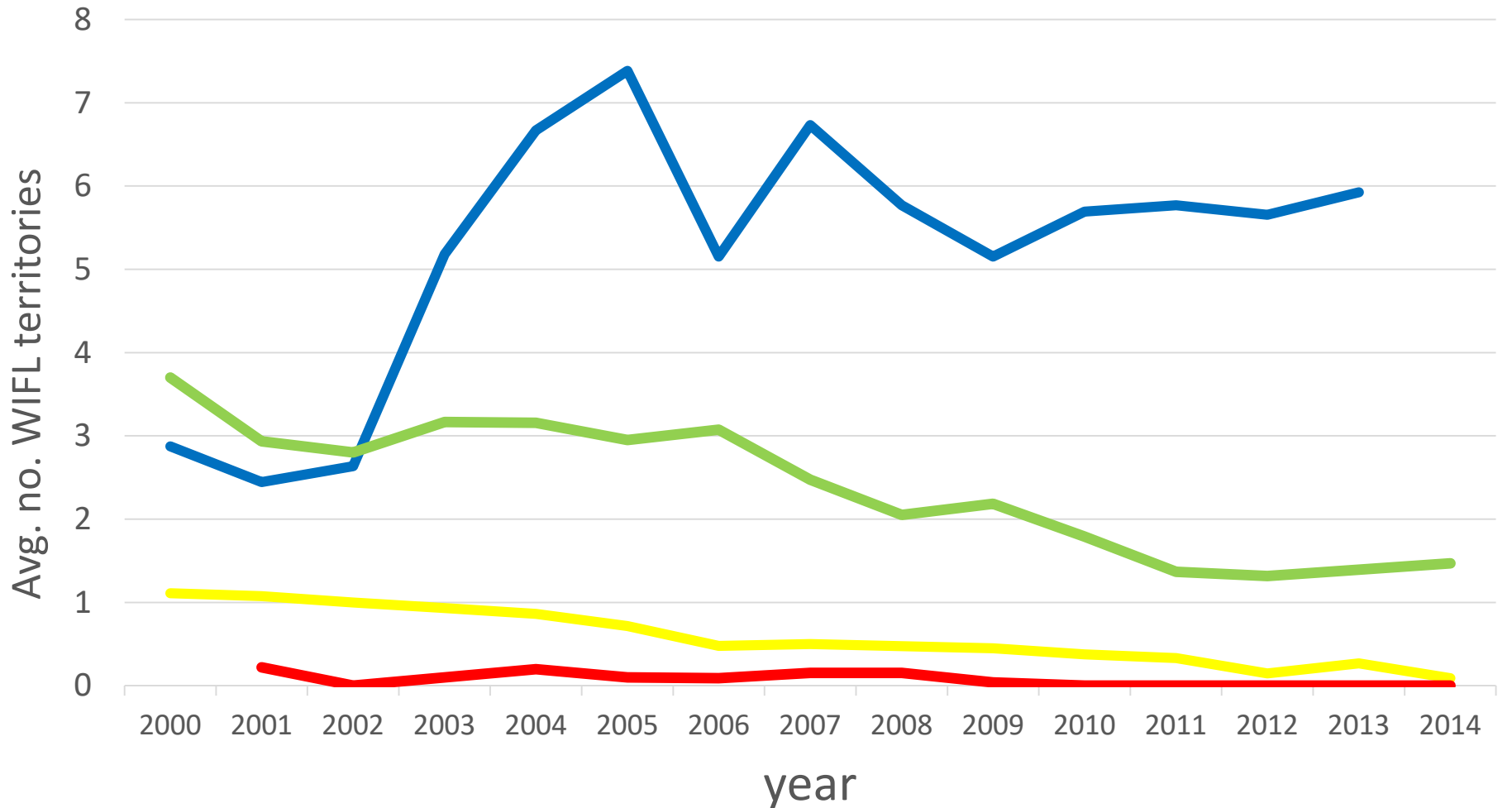


Land manager	All detection types	Breeding season all years	Breeding season >2000	presumed current breeding
Forest Service	39	43	54	59
National Parks	17	22	29	28
BLM	3	2	0	0
State Lands	88	101	126	202
Private	67	88	108	109
Mean	42.8	51.2	63.4	79.6

Time since last detection vs. latitude



Change in no. of territories 2000-2014



— north (n=13 sites) — north-central (n=20 sites) — south-central (n=23 sites) — south (n=14 sites)

Priority management areas

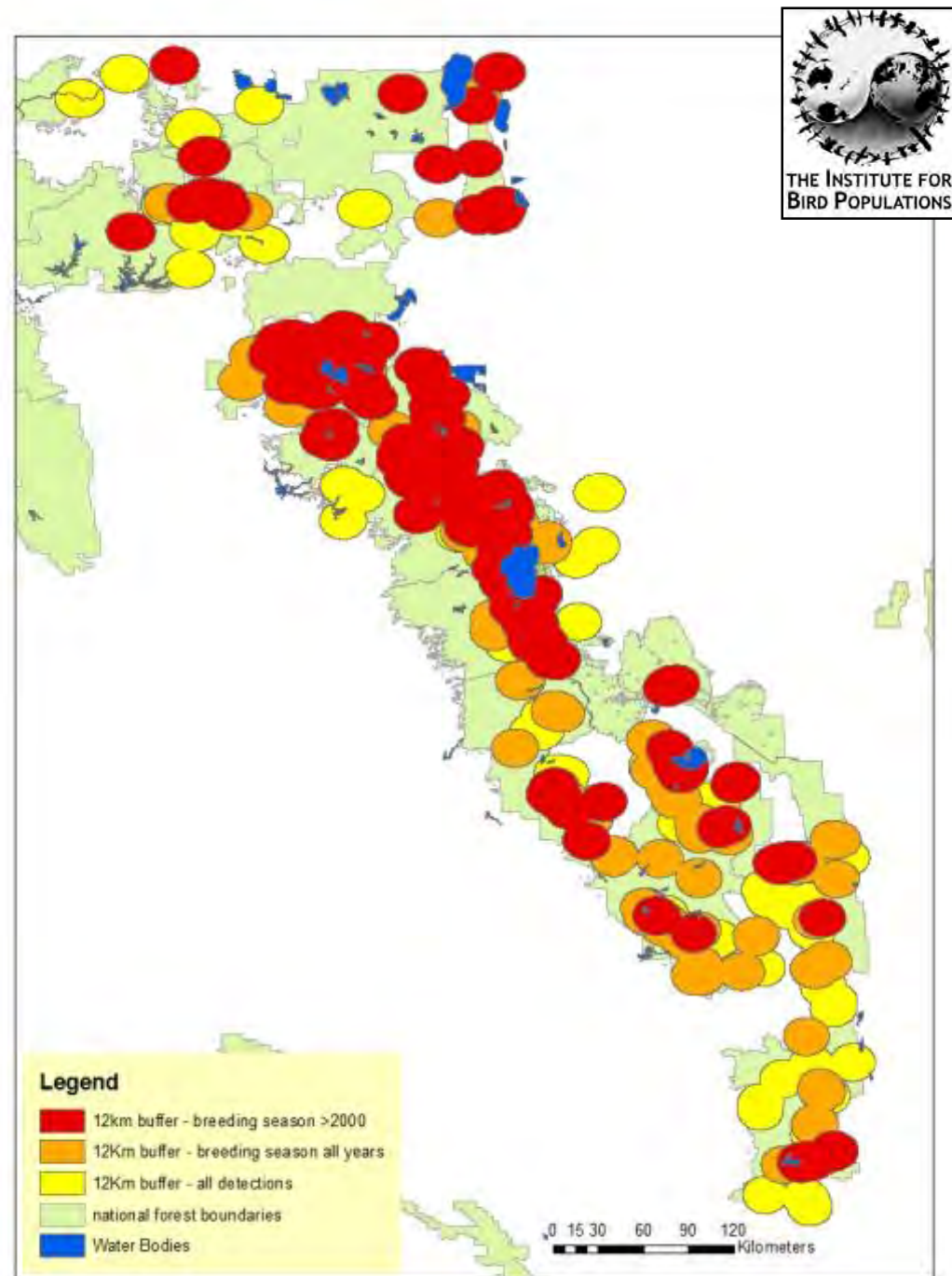
Yellow - low priority

Orange – moderate priority

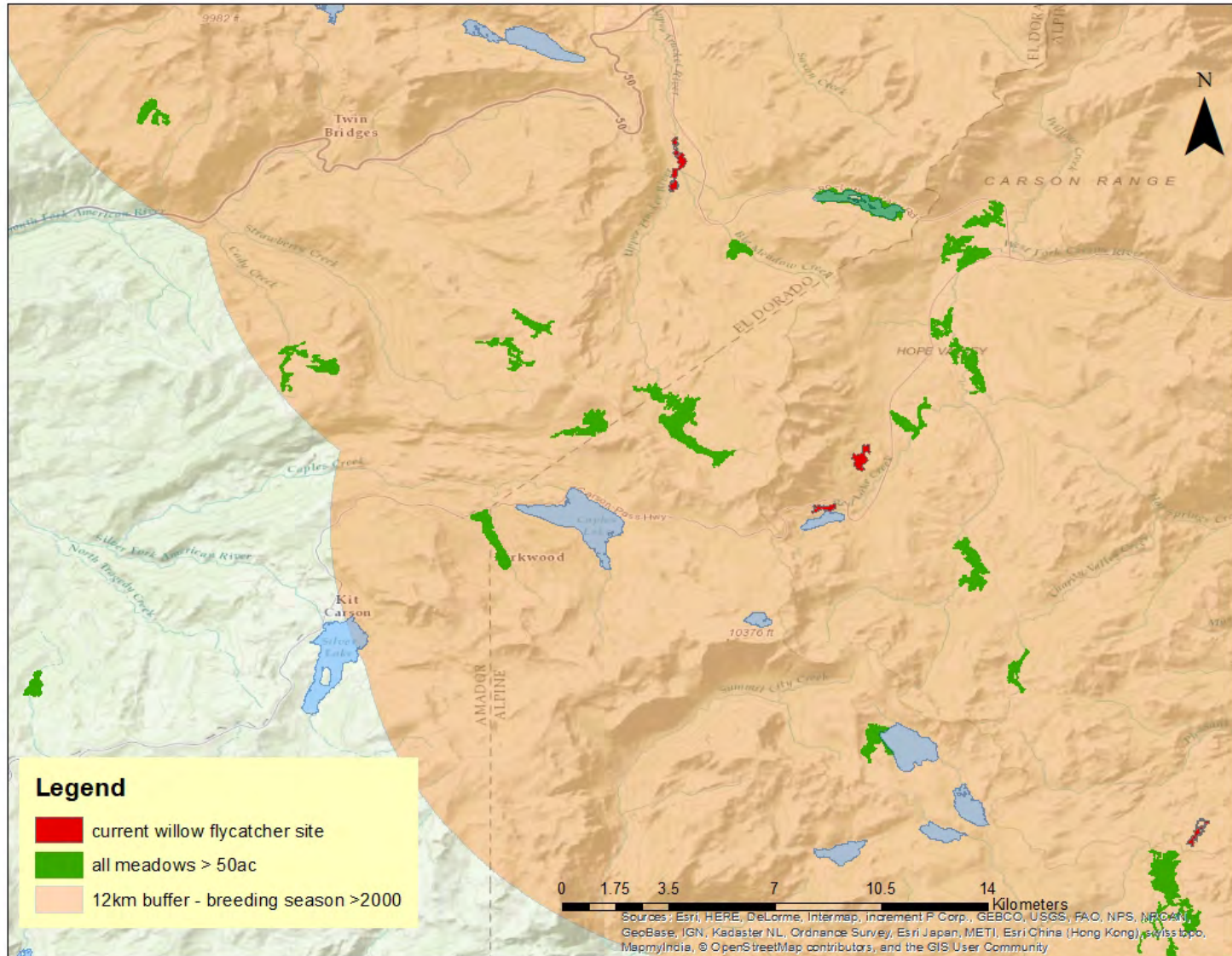
Red – high priority

north of Lake Tahoe- greatest chance of recolonization

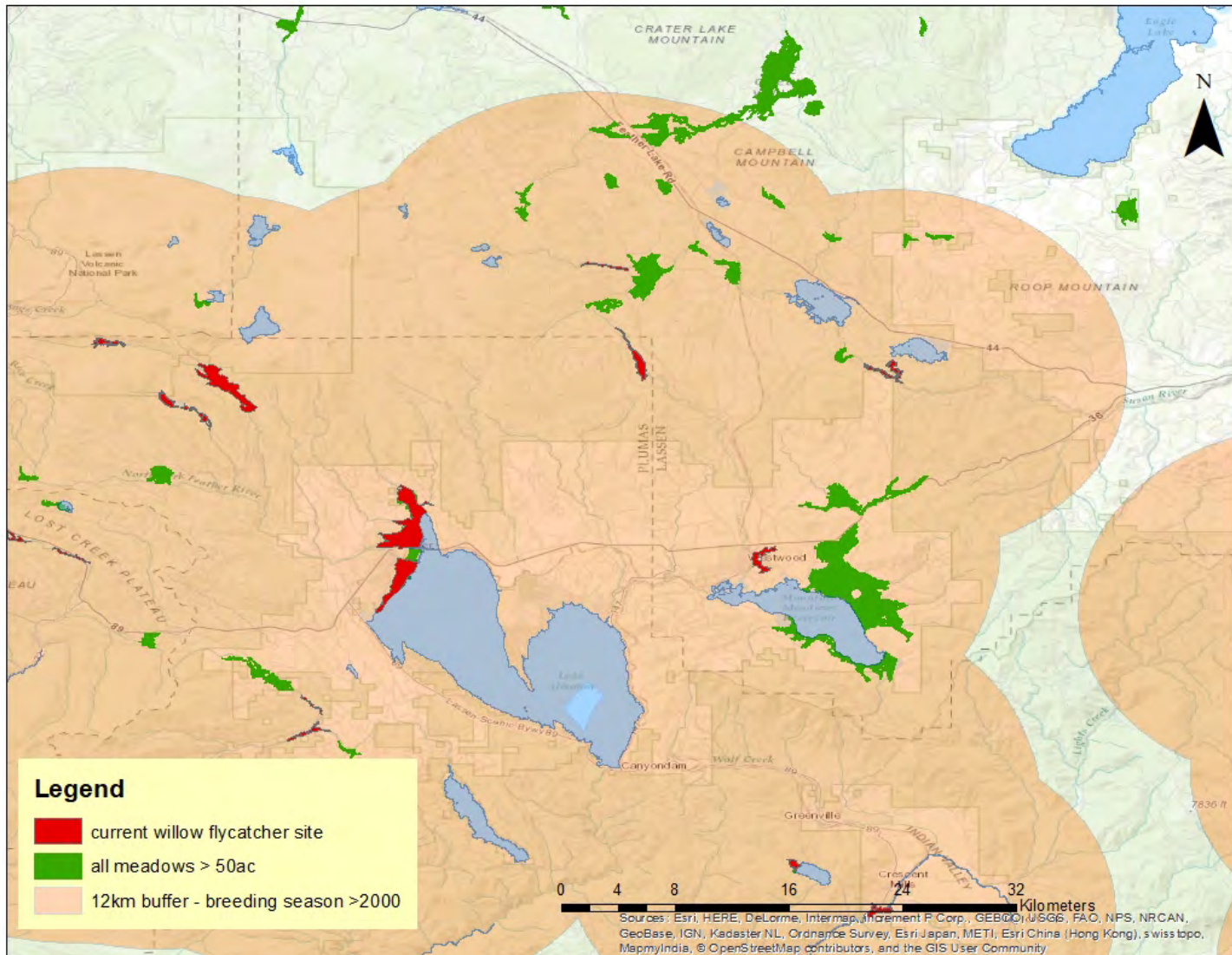
south of Lake Tahoe- greatest risk of permanent extirpation



Restoration Priorities



Restoration Priorities



Meadows within 12km of currently occupied meadows

All meadows			large meadows > 20 ha		
No.	Area	Mean size (sd)	No.	Area	Mean size (sd)
4,499	28,782 ha	6 ha (41)	207	17,820 ha	86 ha (173)



Acknowledgements

- National Fish and Wildlife Foundation
- UC Davis Sierra Nevada multi-source meadows clearinghouse: <http://meadows.ucdavis.edu>
- Patti Krueger — USDA Forest Service
- Tim Lindeman - USDA Forest Service
- Heather Mathewson — Tartleton State University